



## 10 Nuthatch Close

Wynyard, Billingham, TS22 5FU

**£345,000**



**\*\*No Onward Chain\*\***

Igomove is proud to present this exceptional four-bedroom detached family home, beautifully positioned on a desirable corner plot within the highly sought-after Wynyard Park development. Immaculately presented throughout and finished to an exceptional standard, this stunning property effortlessly combines contemporary design with timeless elegance, creating a home that is both stylish and practical for modern family living.



From the moment you arrive, the home commands attention with its attractive double-fronted façade, blending crisp rendered elevations with traditional red brick detailing beneath a pitched tiled roof. Neatly maintained front lawns and established planting create an impressive first impression, while the detached garage and generous block-paved driveway provide ample off-road parking with gated access leading into the rear garden.

Stepping through the front door, you are welcomed by a spacious and beautifully presented entrance hallway that immediately showcases the quality and attention to detail found throughout the home. Finished in soft neutral tones with elegant wall panelling, contemporary tiled flooring and plush carpeting to the staircase, the hallway provides a warm and inviting introduction while offering access into main ground floor accommodation including guest cloakroom/WC.

Undoubtedly the heart of the home is the impressive 21ft open-plan kitchen and dining room, a bright and sociable space thoughtfully designed with modern family life in mind. Flooded with natural light from French doors opening directly onto the rear garden, the room perfectly balances functionality with style. The contemporary kitchen features a comprehensive range of sleek shaker-style cabinetry in warm taupe tones, beautifully complemented by light work surfaces, tiled splashbacks and brushed chrome fixtures. Integrated appliances, a six-ring gas hob with stainless steel extractor and eye-level double oven complete this sophisticated space, while the large breakfast peninsula creates the perfect spot for casual dining, entertaining guests or keeping the family connected whilst cooking.

Leading directly from the kitchen is a well-appointed utility room, providing additional storage, worktop space and plumbing for laundry appliances. Practical yet equally well-finished, it also benefits from a useful storage cupboard and external access to the rear of the property.

Occupying the opposite side of the property is the beautifully proportioned 21ft dual-aspect lounge, an elegant yet incredibly comfortable living space. Large windows to both the front and side elevations, including an attractive bay window, allow natural light to flood the room throughout the day. The soft colour palette is enhanced by bespoke half-height wall panelling in muted sage green, creating warmth and character while complementing the plush neutral carpets.

Ascending to the first floor, the spacious landing continues the home's calming colour palette and provides access to all four bedrooms and the family bathroom.

The master bedroom has been designed to create a peaceful retreat, offering fitted wardrobes that maximise storage without compromising floor space, alongside a stylish en-suite shower room finished with contemporary fittings and neutral tiling. Soft décor, plush carpeting and excellent natural light combine to create a calm and luxurious atmosphere.

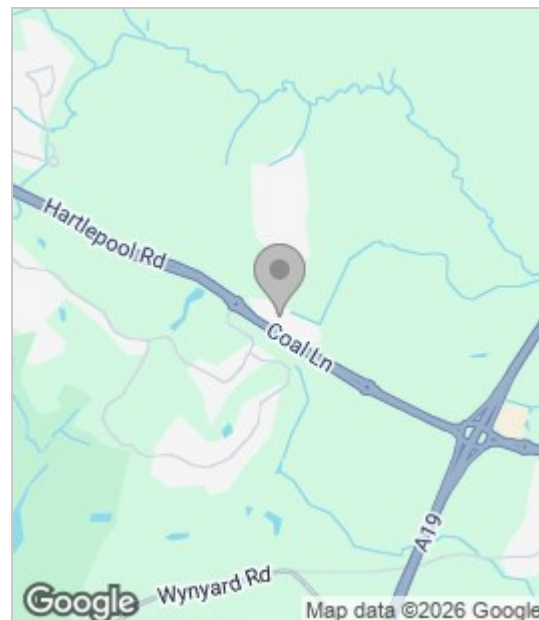
Bedroom two is another generous double bedroom and also benefits from fitted wardrobes, making it ideal for family members or guests. Bedrooms three and four are equally well presented and offer flexible accommodation, whether utilised as children's bedrooms, guest rooms, dressing rooms or a dedicated home office.

The family bathroom has been finished in a timeless style with a modern white suite comprising a panelled bath with shower over, wash hand basin and WC, all complemented by neutral tiling and quality fixtures to create a bright and relaxing space.

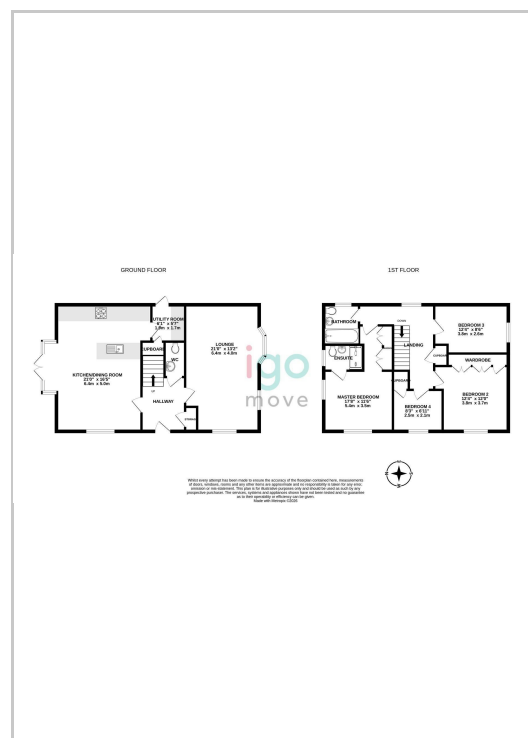
Externally, the property continues to impress. The beautifully landscaped rear garden has been carefully designed to provide a wonderful extension of the living accommodation, enjoying a sunny aspect and an excellent degree of privacy with minimal overlooking from neighbouring properties. Predominantly laid to lawn and complemented by paved patio seating areas, the garden offers the perfect setting for outdoor dining, summer entertaining or family play. Mature planting adds texture and colour, while the detached garage provides excellent storage or workshop potential alongside secure parking. Gated access connects the garden directly to the driveway, enhancing both practicality and convenience.

Occupying an enviable corner plot within one of the North East's most prestigious residential developments, this outstanding family home offers an exceptional combination of generous living space, luxurious presentation and thoughtfully designed interiors. Make this home your won and boom your viewing today. Igomove is open 7 days a week.

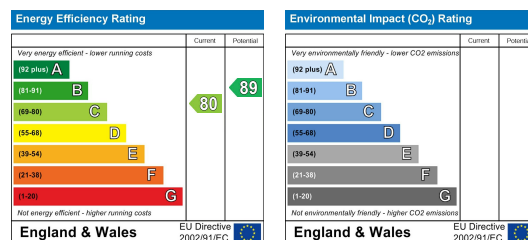
## Area Map



## Floor Plan



## Energy Efficiency Graph



These particulars, whilst believed to be accurate are set out as a general outline only for guidance and do not constitute any part of an offer or contract. Intending purchasers should not rely on them as statements of representation of fact, but must satisfy themselves by inspection or otherwise as to their accuracy. No person in this firm's employment has the authority to make or give any representation or warranty in respect of the property.